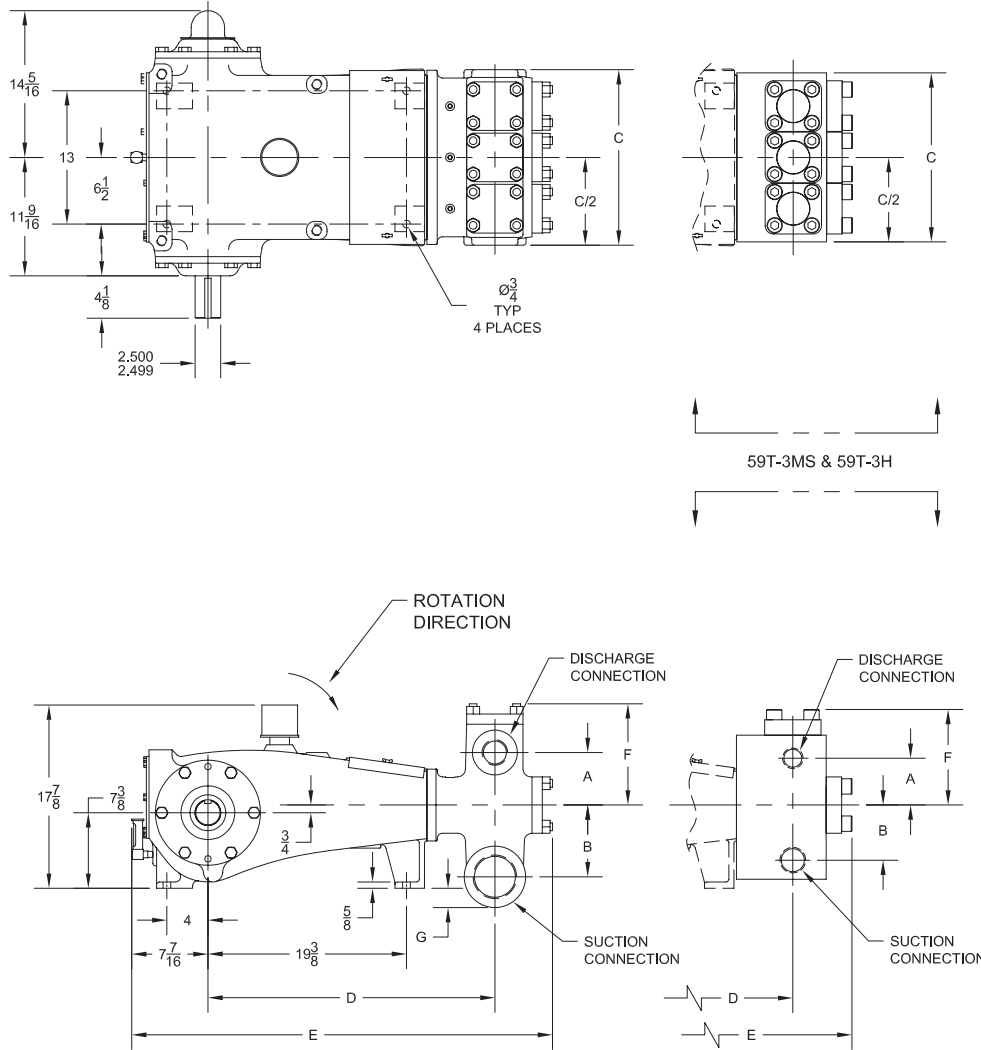


59T-3 Triplex Plunger Pump

Specifications



Pump Size:

maximum plunger size x stroke length, in.(mm):
3.00 x 3.500 (76.2 x 88.9)

Rated BHP (kW) at 420 RPM: 59 (44)

Rated plunger load, pounds (kg): 4760 (2159)

Maximum discharge pressure: psi (kPa)

"L" model: 970 (6686)

"M" model: 2295 (15825)

"MS" model: 4789 (33017)

"H" model: 10000 (68948)

Crankshaft extension:

Diameter, in.(mm): 2.500 (63.5)

Length, in (mm): 4.13 (104.9)

Keyway width x depth, in.(mm):

5/8 x 5/16 (15.88 x 7.94)

Maximum recommended sheave diameter, in.(mm): 38 (965.2)

For larger sizes: **Contact Factory**

Pinion shaft extension,

if gear reducer is supplied, in.(mm)

For belt or chain drive: **Contact Factory**

For direct drive: Diameter: 2.000 (50.8)

Length: 4.250 (108.0)

Keyway width x depth:

1/2 x 1/4 (12.70 x 6.35)

Accessory gear reduction unit:

3.00:1, 3.12:1, 3.23:1, 3.36:1, 3.49:1,

3.62:1, 3.78:1, 3.94:1, 4.11:1, 4.29:1,

4.48:1, 4.69:1, 4.93:1, 5.17:1

Oil Capacity, gallons (L)

Crankcase: 2.50 (9.46)

Gear Reducer - varies with ratio:

1.25 to 1.50 (4.73 to 5.68)

Weight, pump only on

wood shipping skids, pounds (kg)

"L" model: 1100 (499)

"M" model: 980 (445)

"MS" model: 1080 (490)

"H" model: 1035 (469)

Standard Materials For Fluid End Bodies

"L" model

Cast Ductile Iron

Forged/Plate Carbon Steel

Cast Nickel-Aluminum-Bronze

Cast Duplex Stainless Steel

"M" model

Cast Ductile Iron

Cast/Forged/Plate Carbon Steel

Cast Nickel-Aluminum-Bronze

Cast Duplex Stainless Steel

"MS" model

Forged Nickel-Aluminum-Bronze

Forged 316 Stainless Steel

Forged/Plate Carbon Steel

"H" model

Forged 15-5 Stainless Steel

Pump Model	Flange Connections		Dimensions (Inches)						
	Discharge Connection Sizes	Suction Connection Sizes	A	B	C	D	E	F	G
59T-3L	2 1/2 (63.5)-8 NPT	4 (101.6)-8 NPT	5 1/8	7	17 1/8	28	41 1/16	9 7/8	1 7/8
59T-3M	2 (50.8)-11 1/2 NPT	2 1/2 (63.5)-8 NPT	3 7/16	5 3/8	16 5/8	27 3/16	40 5/16	8 1/8	-3/4
59T-3MS	2 (50.8)-11 1/2 NPT	2 1/2 (63.5)-8 NPT	4 9/16	5 3/8	16 1/2	26 7/8	40 1/16	9 5/16	-7/8
59T-3H	1 (25.4)-11 1/2 NPT	1 1/2 (38.1)-11 1/2 NPT	3 7/8	4 3/8	28	24 3/4	39 5/8	8 3/16	-7/8

