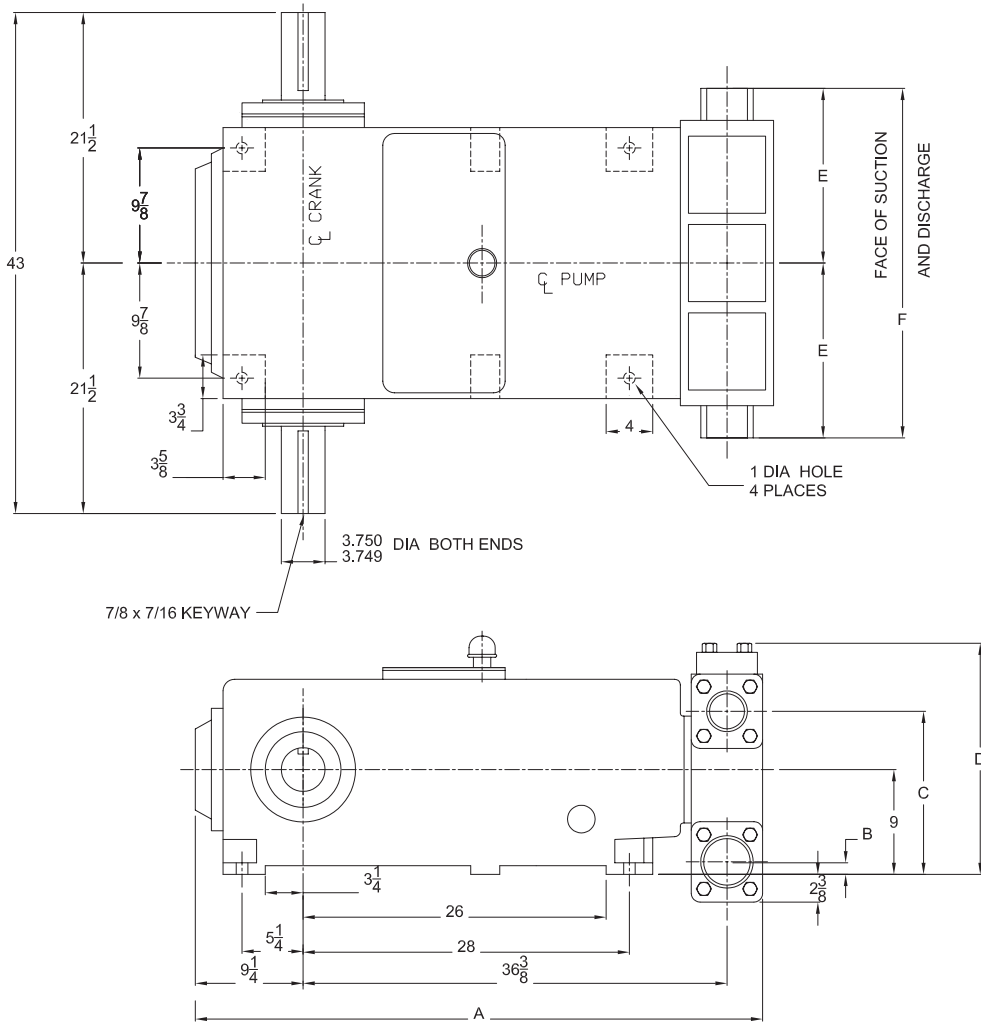


125T-4 Triplex Plunger Pump



Specifications

Pump Size

maximum plunger size x stroke length in.(mm):
4 x 4 (101.6 x 101.6)

Rated bhp at 450 rpm (kw): 125 (93)

Rated plunger load pounds(Kg): 8250 (3742.2)

Maximum discharge pressure: psi(kPa)

"L" model: 1500 (10,342)

"M" model: 3180 (21,925)

"H" model: 5000 (34,474)

Crankshaft extension: in.(mm)

Diameter: 3 3/4 (95.25)

Length: 7 1/2 (191)

Keyway (width x depth):

7/8 x 7/16 (22.2 x 11.1)

Maximum recommended sheave

in.(mm): 44 (1118)

Minimum recommended sheave

in.(mm): 24 (610)

For larger sizes: **Contact Factory**

Pinion shaft extension,

if gear reducer is supplied in.(mm)

For belt or chain drive: **Contact Factory**

For direct drive: Diameter: 2 7/8 (73)

Length: 6 3/4 (171)

Keyway (width x depth):

3/4 x 3/8 (19 x 9.5)

Accessory gear reduction unit:

2.596:1, 3.109:1, 3.947:1, 6.192:1

Oil Capacity, gallons (L)

Crankcase & Gear - Approximate: 10 (38)

Weight, pump only on

wood shipping skids pounds (Kg):

1747 (792)

with Gear reducer, approximate pounds (Kg):

2322 (1053)

Pump Model	Flange Connections		Dimensions in inches (mm)					
	Discharge Connection Sizes	Suction Connection Sizes	A	B	C	D	E	F
125T-4L	3 (76.2) Sch. 160, V-Bevel	6 (152.4) Sch. 40, V-bevel	52 5/8	2	15 3/4	20 1/2	16	32
125T-4M	3 (76.2) Sch. 160, V-Bevel	4 (101.6) Sch. 40, V-bevel	48 3/4	4	14	19 7/8	15	30
125T-4H	2 (50.8) Sch. 160, V-Bevel	3 (76.1) Sch. 40, V-bevel	48 3/4	6 3/8	12 3/4	17 7/8	15	30

125T-4 Triplex Plunger Pump

Performance Data

PUMP	English Units					150 RPM		250 RPM		300 RPM		350 RPM		400 RPM		450 RPM	
	Plunger Dia. In.	Plunger Area Sq. In.	BPD per RPM	GPM per RPM	Max. Press. PSI	BPD	GPM	BPD	GPM	BPD	GPM	BPD	GPM	BPD	GPM	BPD	GPM
125T-4L	4.000	12.5664	22.3816	0.6528	657	3358	97.9	5596	163.2	6715	195.8	7834	228.5	8953	261.1	10072	293.8
	3.750	11.0447	19.6714	0.5737	747	2951	86.1	4918	143.4	5902	172.1	6885	200.8	7869	229.5	8853	258.2
	3.500	9.6211	17.1359	0.4998	857	2571	75.0	4284	124.9	5141	149.9	5998	174.9	6855	199.9	7712	224.9
	3.000	7.0686	12.5897	0.3672	1167	1889	55.1	3148	91.8	3777	110.2	4407	128.5	5036	146.9	5666	165.2
	2.750	5.9396	10.5788	0.3085	1389	1587	46.3	2645	77.1	3174	92.6	3703	108.0	4232	123.4	4761	138.8
	2.500	4.9087	8.7428	0.2550	1500	1312	38.2	2186	63.7	2623	76.5	3060	89.2	3498	102.0	3935	114.7
	2.375	4.4301	7.8904	0.2301	1500	1184	34.5	1973	57.5	2368	69.0	2762	80.5	3157	92.1	3551	103.6
125T-4M	3.000	7.0686	12.5897	0.3672	1167	1889	55.1	3148	91.8	3777	110.2	4407	128.5	5036	146.9	5666	165.2
	2.750	5.9396	10.5788	0.3085	1389	1587	46.3	2645	77.1	3174	92.6	3703	108.0	4232	123.4	4761	138.8
	2.500	4.9087	8.7428	0.2550	1681	1312	38.2	2186	63.7	2623	76.5	3060	89.2	3498	102.0	3935	114.7
	2.250	3.9761	7.0817	0.2065	2075	1063	31.0	1771	51.6	2125	62.0	2479	72.3	2833	82.6	3187	92.9
	2.000	3.1416	5.5954	0.1632	2626	840	24.5	1399	40.8	1679	49.0	1959	57.1	2239	65.3	2518	73.4
	1.875	2.7612	4.9178	0.1434	2988	738	21.5	1230	35.9	1476	43.0	1722	50.2	1968	57.4	2214	64.5
	1.750	2.4053	4.2840	0.1249	3180	643	18.7	1071	31.2	1286	37.5	1500	43.7	1714	50.0	1928	56.2
125T-4H	1.625	2.0739	3.6938	0.1077	3180	555	16.2	924	26.9	1109	32.3	1293	37.7	1478	43.1	1663	48.5
	2.250	3.9761	7.0817	0.2065	2075	1063	31.0	1771	51.6	2125	62.0	2479	72.3	2833	82.6	3187	92.9
	2.000	3.1416	5.5954	0.1632	2626	840	24.5	1399	40.8	1679	49.0	1959	57.1	2239	65.3	2518	73.4
	1.875	2.7612	4.9178	0.1434	2988	738	21.5	1230	35.9	1476	43.0	1722	50.2	1968	57.4	2214	64.5
	1.750	2.4053	4.2840	0.1249	3430	643	18.7	1071	31.2	1286	37.5	1500	43.7	1714	50.0	1928	56.2
	1.625	2.0739	3.6938	0.1077	3978	555	16.2	924	26.9	1109	32.3	1293	37.7	1478	43.1	1663	48.5
	1.500	1.7671	3.1474	0.0918	4669	473	13.8	787	22.9	945	27.5	1102	32.1	1259	36.7	1417	41.3
1.375	1.4849	2.6447	0.0771	5000	397	11.6	662	19.3	794	23.1	926	27.0	1058	30.9	1191	34.7	
Brake Horsepower Required							42	70	84	97	111	125					

PUMP	Metric Units					150 RPM		250 RPM		300 RPM		350 RPM		400 RPM		450 RPM	
	Plunger Dia. mm	Plunger Area cm ²	M ³ /Hr per RPM	L/Sec. per RPM	Max. Press. kPa	M ³ /Hr	L/Sec.	M ³ /Hr	L/Sec.	M ³ /Hr	L/Sec.	M ³ /Hr	L/Sec.	M ³ /Hr	L/Sec.	M ³ /Hr	L/Sec.
125T-4L	102	81.073	0.1483	0.0412	4527	22.2	6.2	37.1	10.3	44.5	12.4	51.9	14.4	59.3	16.5	66.7	18.5
	95	71.256	0.1303	0.0362	5150	19.5	5.4	32.6	9.0	39.1	10.9	45.6	12.7	52.1	14.5	58.6	16.3
	89	62.072	0.1135	0.0315	5912	17.0	4.7	28.4	7.9	34.1	9.5	39.7	11.0	45.4	12.6	51.1	14.2
	76	45.604	0.0834	0.0232	8047	12.5	3.5	20.8	5.8	25.0	6.9	29.2	8.1	33.4	9.3	37.5	10.4
	70	38.320	0.0701	0.0195	9577	10.5	2.9	17.5	4.9	21.0	5.8	24.5	6.8	28.0	7.8	31.5	8.8
	64	31.669	0.0579	0.0161	10342	8.7	2.4	14.5	4.0	17.4	4.8	20.3	5.6	23.2	6.4	26.1	7.2
	60	28.581	0.0523	0.0145	10342	7.8	2.2	13.1	3.6	15.7	4.4	18.3	5.1	20.9	5.8	23.5	6.5
125T-4M	76	45.604	0.0834	0.0232	8047	12.5	3.5	20.8	5.8	25.0	6.9	29.2	8.1	33.4	9.3	37.5	10.4
	70	38.320	0.0701	0.0195	9577	10.5	2.9	17.5	4.9	21.0	5.8	24.5	6.8	28.0	7.8	31.5	8.8
	64	31.669	0.0579	0.0161	11588	8.7	2.4	14.5	4.0	17.4	4.8	20.3	5.6	23.2	6.4	26.1	7.2
	57	25.652	0.0469	0.0130	14306	7.0	2.0	11.7	3.3	14.1	3.9	16.4	4.6	18.8	5.2	21.1	5.9
	51	20.268	0.0371	0.0103	18106	5.6	1.5	9.3	2.6	11.1	3.1	13.0	3.6	14.8	4.1	16.7	4.6
	48	17.814	0.0326	0.0090	20601	4.9	1.4	8.1	2.3	9.8	2.7	11.4	3.2	13.0	3.6	14.7	4.1
	44	15.518	0.0284	0.0079	21925	4.3	1.2	7.1	2.0	8.5	2.4	9.9	2.8	11.4	3.2	12.8	3.5
125T-4H	41	13.380	0.0245	0.0068	21925	3.7	1.0	6.1	1.7	7.3	2.0	8.6	2.4	9.8	2.7	12.8	3.1
	57	25.652	0.0469	0.0130	14306	7.0	2.0	11.7	3.3	14.1	3.9	16.4	4.6	18.8	5.2	21.1	5.9
	51	20.268	0.0371	0.0103	18106	5.6	1.5	9.3	2.6	11.1	3.1	13.0	3.6	14.8	4.1	16.7	4.6
	48	17.814	0.0326	0.0090	20601	4.9	1.4	8.1	2.3	9.8	2.7	11.4	3.2	13.0	3.6	14.7	4.1
	44	15.518	0.0284	0.0079	23649	4.3	1.2	7.1	2.0	8.5	2.4	9.9	2.8	11.4	3.2	12.8	3.5
	41	13.380	0.0245	0.0068	27427	3.7	1.0	6.1	1.7	7.3	2.0	8.6	2.4	9.8	2.7	11.0	3.1
	38	11.401	0.0208	0.0058	32189	3.1	0.9	5.2	1.4	6.3	1.7	7.3	2.0	8.3	2.3	9.4	2.6
35	9.580	0.0175	0.0049	34474	2.6	0.7	4.4	1.2	5.3	1.5	6.1	1.7	7.0	1.9	7.9	2.2	
Kilowatts Required						31	52	63	73	83	93						

For operation below 50 RPM, an auxiliary lubrication system is required.

Volumetric Rate is based on 100% Volumetric Efficiency. Brake Horsepower/Kilowatts Required is based on 90% Mechanical Efficiency. Not all plunger sizes are shown. Contact National-Oilwell for additional information.

The information and data on this sheet is accurate to the best of our knowledge and belief, but are intended for general information only. Applications suggested for the materials are described only to help readers make their own evaluations and decisions, and are neither guarantees nor to be construed as express or implied warranties of suitability for these or other applications. National Oilwell makes no warranty either express or implied beyond that stipulated in National Oilwell Standard Terms and Conditions of Sale.

Authorized Distributor:



www.nov.com • mission.sales@nov.com
 10000 Richmond, Houston, Texas 77042
 (713)346-7500 (phone) • (713)346-7366 (fax)