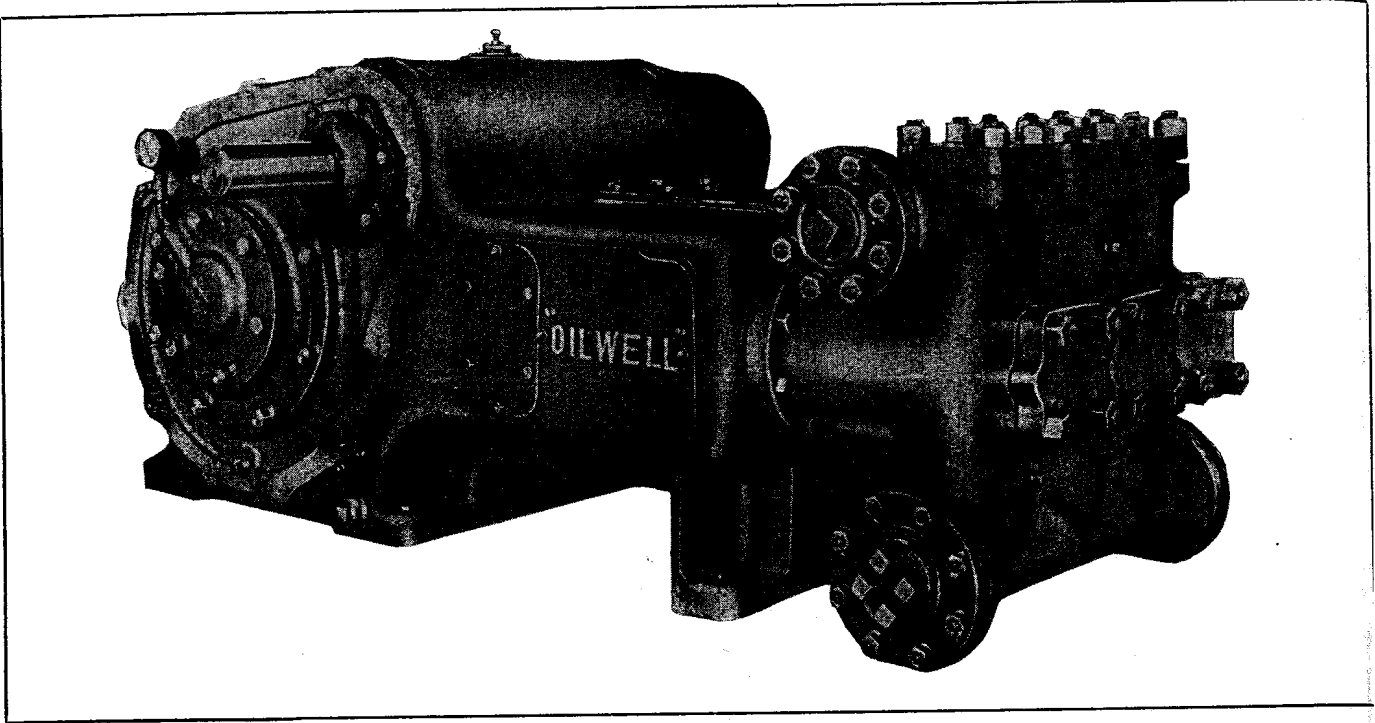


SIX-INCH STROKE, SINGLE-ACTING, TRIPLEX PLUNGER POWER PUMPS



No. 326-P, No. 36-P, and No. 46-P (Illustrated)

These compact, heavy-duty, horizontal, three-cylinder, single-acting pumps are designed for continuous waterflooding operation. They will deliver large volumes at pressures ranging from 630 psi to 5,650 psi.

The No. 326-P, in addition to being a waterflood pump, is also designed for use as the power-oil injector in subsurface hydraulic "pump-in-pump-out" producing wells. This pump not only provides the lesser pressures required to effect operation of the subsurface pump, but will also deliver the extremely high pressures required to dislodge and raise the

subsurface pump should it require inspection.

One of the many outstanding features of this line of 6" stroke plunger pumps is that all three fluid ends are interchangeable with one another. Thus, one power end will serve throughout the waterflooding project regardless of change in the pressure required by the formation or increases in the size of the flood.

Fluid ends in materials other than standard are available on special order.

SPECIFICATIONS

Pumps.....	No. 326-P	No. 36-P	No. 46-P
Pump Size (Maximum Fluid Plunger Diameter x Stroke)..... inches	2 1/4 x 6	3 x 6	4 1/2 x 6
Standard Fluid Plunger Sizes..... inches	1 1/4, 1 1/2, 1 3/4, 2, 2 1/4	2 1/2, 2 3/4, 3	3 1/4, 3 1/2, 4, 4 1/2
Rated Working Pressure of Fluid Chamber: Discharge..... psi	5,650	2,040	1,200
Suction..... psi	230	230	230
Normal Speed (See Table, Page 3859)..... rpm	200	185	185
Brake Horsepower Input at Normal Speed..... bhp	92.5	92.5	92.5
Maximum Working Pressure with 2 1/4" Plungers..... psi	2,520
Maximum Working Pressure with 3" Plungers..... psi	1,420
Maximum Working Pressure with 4 1/2" Plungers..... psi	630
Gear Ratio: Standard.....	4.44:1	4.44:1	4.44:1
Special (Furnished only on request).....	3.12:1	3.12:1	3.12:1
Pinion-Shaft Extension: Diameter at Pulley x Length..... inches	2.995 x 8	2.995 x 8	2.995 x 8
Keyway (Width x Depth)..... inches	3/4 x 1/4	3/4 x 1/4	3/4 x 1/4
Oil Capacity..... gallons	13	13	13
Standard Fluid End Materials.....	Forged Steel	Cast Steel, Forged Steel or Bronze	Cast Steel, Forged Steel or Bronze
Stuffing Box Dimensions (Plunger Diameter x ID of Box x Depth of Packing) (Including Lantern Ring)..... inches	2 1/4 x 3 1/4 x 3 3/4	3 x 4 1/8 x 4 13/16	4 1/2 x 5 1/4 x 4 11/16
Fluid Suction Pipe Tap..... inches	3
Fluid Discharge Pipe Tap..... inches	2
Fluid Suction Connection (3" x 7 1/2" Series 150) Pipe Size..... inches	3
Fluid Discharge Connection (2" x 6 1/2" Series 600) Pipe Size..... inches	2
Fluid Suction Connection (4" x 9" Series 150) Pipe Size..... inches	4
Fluid Discharge Connection (3" x 8 1/4" Series 600) Pipe Size..... inches	3
Overall Dimensions — Please Refer to Dimensional Drawing on Page 3859.....
Weight with Standard Equipment Only..... pounds	4,454	4,076	4,400
Mounted on Wood Shipping Skids..... pounds	4,876	5,200
Mounted on Extended Structural Steel Skid Base..... pounds

We reserve the right to change specifications at any time without incurring any obligation for equipment previously or subsequently sold.



TRIPLEX PUMPS

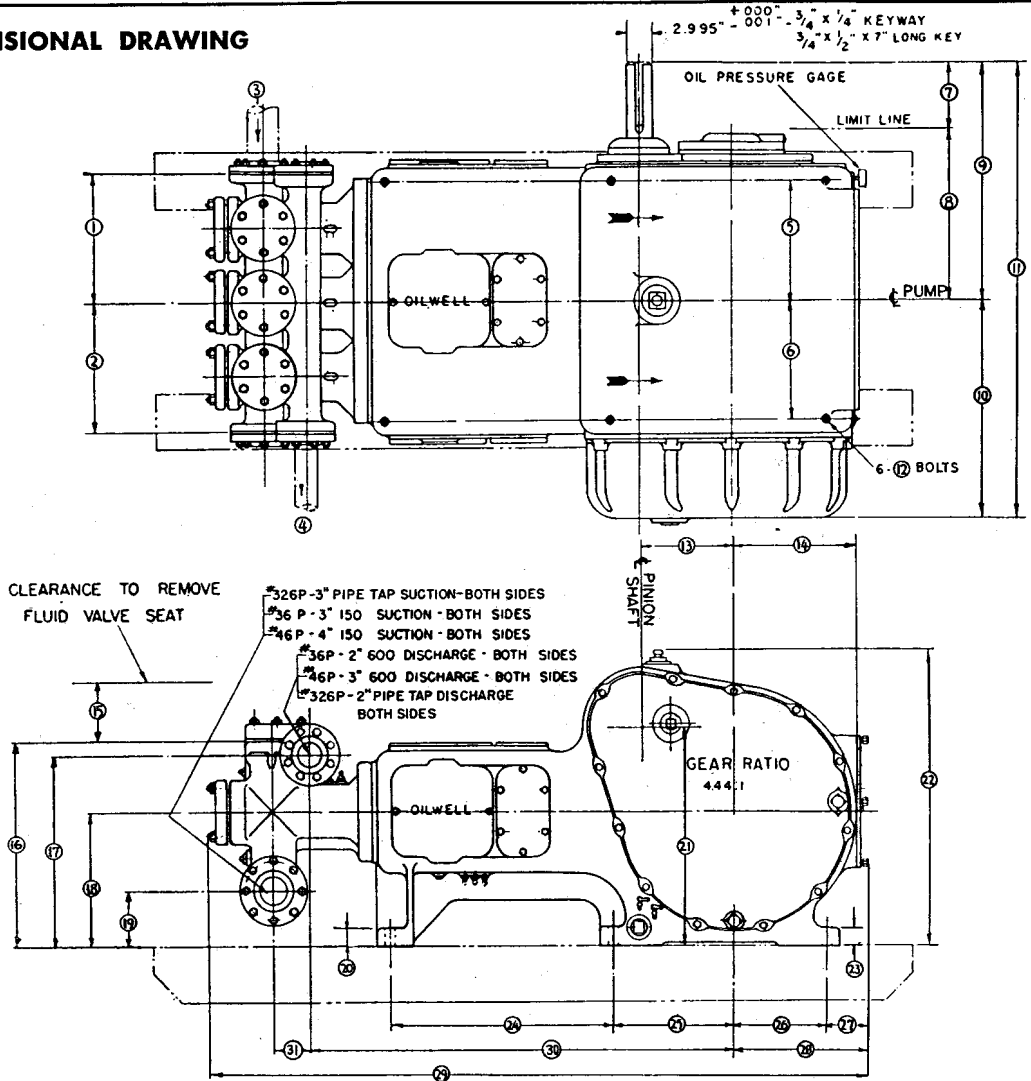
DISPLACEMENT AND HORSEPOWER REQUIREMENTS

Plunger Size, Inches	Maximum Working Pressure (psi)	DISPLACEMENT									
		Gallons Per Rev.	†Barrels per 24 Hours at Pump Speed (rpm) of:								
			80	100	120	140	160	185	200*	225*	
No. 326-P — 1	5,650	.0612	168	210	252	294	336	388	420	462	
1 1/4	5,650	.0775	212	266	319	372	425	491	532	598	
1 1/2	5,650	.0955	262	327	393	458	524	606	655	737	
1 3/4	5,650	.1158	317	397	476	555	635	733	795	895	
1 1/2	5,650	.138	380	475	570	665	760	878	950	1,070	
1 3/4	4,150	.188	518	648	778	907	1,037	1,200	1,295	1,455	
2	3,180	.245	667	835	1,002	1,168	1,335	1,543	1,672	1,875	
2 1/4	2,520	.310	852	1,064	1,277	1,490	1,703	1,970	2,130	2,395	
No. 36-P — 2 1/2	2,040	.382	1,048	1,310	1,570	1,835	2,095	2,420	2,620	2,950	
2 3/4	1,680	.463	1,270	1,587	1,905	2,220	2,540	2,930	3,170	3,570	
3	1,420	.551	1,510	1,890	2,265	2,645	3,020	3,495	3,780	4,250	
No. 46-P — 3 1/4	1,200	.646	1,770	2,215	2,660	3,100	3,540	4,090	4,425	4,980	
3 1/2	1,040	.749	2,055	2,565	3,080	3,590	4,110	4,750	5,130	5,770	
4	795	.979	2,680	3,355	4,025	4,695	5,365	6,205	6,710	7,550	
4 1/2	630	1.239	3,400	4,250	5,100	5,950	6,800	7,860	8,500	9,500	
Pinion Shaft rpm:											
Gear Ratios, 4.44:1 (Standard)			355	444	533	622	710	821	888	999	
3.12:1 (Special)			250	312	375	437	499	577	624	702	
1.78:1 (Special)			142	178	214	249	285	329	355	400	
5.52:1 (Special)			442	552	662	773	884	1,020	1,100	1,240	
Brake Horsepower Required			40	50	60	70	80	92.5	100	112	

†gpm = Barrels per 24 Hours

34.3
 *NOTE: Speeds above 200 rpm on No. 326-P and 185 rpm on No. 36-P and No. 46-P recommended only when service application has "Oilwell" engineering approval. Important points of consideration involve character of liquid, elevation above sea level, suction pressure at pump, and the size and arrangement of suction piping. "Oilwell" waterflood specialists are available to assist you in planning for proper operating conditions.

DIMENSIONAL DRAWING



	No. 326-P	No. 36-P	No. 46-P		No. 326-P	No. 36-P	No. 46-P		No. 326-P	No. 36-P	No. 46-P
1....	11 1/2"	13 3/4"	13 3/4"	11....	4' 1 1/4"	4' 1 1/4"	4' 1 1/8"	21....	23"	23"	23"
2....	11 1/2"	13 3/4"	13 3/4"	12....	7 1/2"	7 1/2"	7 1/2"	22....	31 1/2"	31 1/2"	31 1/2"
3....	3"	3"	3"	13....	10 3/8"	10 3/8"	10 3/8"	23....	9"	9"	9"
4....	2"	2"	2"	14....	13 1/2"	13 1/2"	13 1/2"	24....	25"	25"	25"
5....	12 7/8"	12 7/8"	12 7/8"	15....	7"	7 3/4"	7"	25....	13 1/2"	13 1/2"	13 1/2"
6....	12 7/8"	12 7/8"	12 7/8"	16....	23 1/2"	24 1/4"	24"	26....	10 1/2"	10 1/2"	10 1/2"
7....	7 3/4"	7 3/4"	7 3/4"	17....	19"	20 1/2"	21 3/8"	27....	4 3/8"	4 3/8"	4 3/8"
8....	18 1/4"	18 1/4"	18 1/4"	18....	14 1/2"	14 1/4"	14 3/8"	28....	14 7/8"	14 7/8"	14 7/8"
9....	25 1/2"	25 1/2"	25 1/2"	19....	7 7/8"	5 3/4"	4 3/8"	29....	5' 11"	6' 1 1/4"	6' 1 1/4"
10....	23 3/8"	23 3/8"	23 3/8"	20....	2"	2"	2"	30....	3' 9"	3' 11 1/4"	3' 11 1/8"
								31....	4 3/2"	4 3/2"	4"