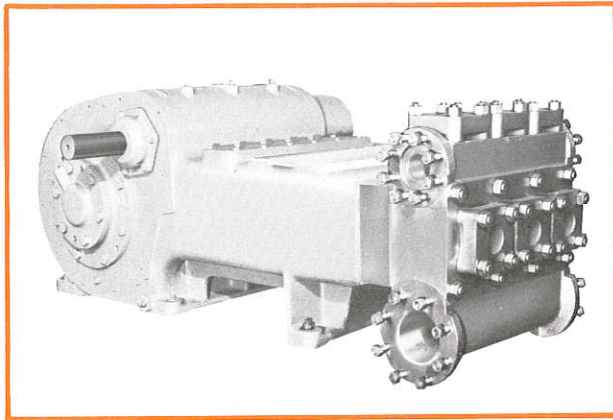


346P-ST Triplex With Forged Steel Fluid End

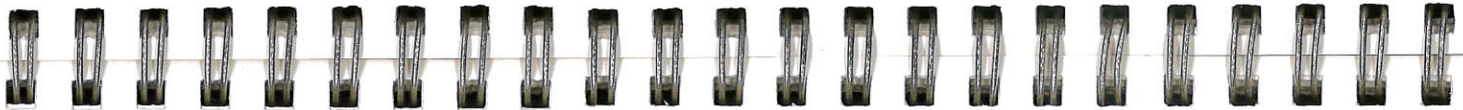
Specifications

English Metric



Pump Size (Max. Plunger Dia. x Stroke)	inches	4 1/2 x 6	mm	114 x 152
Standard Plunger Sizes	inches	3, 3 1/8, 3 1/4, 3 3/8, 3 1/2, 3 5/8, 3 3/4, 4, 4 1/8, 4 1/4 and 4 1/2	mm	76, 79, 83, 86, 89, 92, 95, 98, 102, 105, 108, and 114
Rated bhp at 320 rpm	hp	160	kW	119
Maximum Working Pressure:				
Discharge	psi	1420	kPa	9791
Suction	psi	275	kPa	1896
Two Flanged Suction Connections: Pipe Size	inches	6	mm	152
ANSI Rating	class	150	class	150
ANSI Facing		Flat Face		Flat Face
Two Flanged Discharge Connections: Pipe Size	inches	3	mm	76
ANSI Rating	class	600	class	600
ANSI Facing		Large Recess		Large Recess
Gear Unit Reduction Ratio: (Standard)		4.440:1		4.440:1
(Optional)		1.588:1, 1.776:1, 2.487:1, 3.121:1, 5.476:1, 7.130:1		1.588:1, 1.776:1, 2.487:1, 3.121:1, 5.476:1, 7.130:1
Pinion Shaft Extension:				
Diameter	inches	2.995	mm	76
Length	inches	7 1/4	mm	184
Keyway (Width x Depth)	inches	3/4 x 1/4	mm	19 x 6
Rated Plunger Load	pounds	10000	N	44482
Oil Capacity (Crankcase + Gearcase)	gallons	13	litres	49
Weight (On Wood Shipping Skids) (Est.)	pounds	5036	kg	2284

Plunger Diameter			Stuffing Box Bore		
Inches	mm		Inches	mm	
3 - 3 1/8	76 - 79		4 1/8	105	
3 1/4 - 3 1/2	83 - 89		4 1/4	124	
3 3/8 - 4 1/2	92 - 114		5 1/4	133	



Performance Data

(Volumes Indicated are Displacement of Noncompressible Fluid)
ENGLISH UNITS

Plgr. Dia. In.	Plgr. Area (Sq. In.)	Displacement Per Rev.	Max. Pressure psi	100 rpm		150 rpm		200 rpm		250 rpm		300 rpm		320 rpm	
				bpd	gpm	bpd	gpm	bpd	gpm	bpd	gpm	bpd	gpm	bpd	gpm
3	7.0686	.5508	1420	1889	55.08	2834	82.62	3778	110.16	4723	137.70	5668	165.24	6046	176.26
3 1/8	7.6699	.5977	1300	2050	59.77	3075	89.65	4100	119.53	5125	149.41	6150	179.30	6559	191.23
3 1/4	8.2958	.6464	1200	2217	64.64	3326	96.96	4434	129.28	5543	161.61	6652	193.93	7095	206.85
3 3/8	8.9462	.6971	1110	2391	69.71	3587	104.57	4782	139.42	5978	174.28	7173	209.13	7651	223.07
3 1/2	9.6211	.7497	1040	2571	74.97	3857	112.45	5143	149.94	6429	187.42	7714	224.91	8228	239.87
3 3/4	10.321	.8042	965	2758	80.42	4138	120.63	5517	160.84	6896	201.05	8275	241.26	8827	257.34
3 3/8	11.045	.8606	905	2952	86.06	4428	129.09	5904	172.12	7380	215.16	8856	258.19	9446	275.39
3 3/8	11.793	.9190	845	3152	91.90	4728	137.84	6304	183.79	7880	229.74	9456	275.69	10086	294.05
4	12.566	.9792	795	3359	97.92	5038	146.88	6717	195.84	8397	244.80	10076	293.76	10747	313.31
4 1/8	13.364	1.0414	745	3572	104.14	5358	156.20	7144	208.27	8930	260.34	10716	312.41	11429	333.22
4 1/4	14.186	1.1054	705	3792	110.54	5687	165.81	7583	221.08	9479	276.36	11375	331.63	12133	353.73
4 1/2	15.904	1.2393	625	4251	123.93	6376	185.89	8502	247.86	10627	309.82	12752	371.79	13603	396.58
Brake Horsepower Required				50		75		100		125		150		160	

METRIC UNITS

Plgr. Dia. mm	Plgr. Area cm²	Displacement L/rev.	Max. Pressure kPa	100 r/min.		150 r/min.		200 r/min.		250 r/min.		300 r/min.		320 r/min.	
				m³/d	L/s	m³/d	L/s	m³/d	L/s	m³/d	L/s	m³/d	L/s	m³/d	L/s
76	45.6037	2.0850	9754	300	3.47	450	5.21	600	6.95	751	8.69	901	10.42	961	11.12
79	49.4832	2.2624	8989	326	3.77	489	5.66	652	7.54	814	9.43	977	11.31	1042	12.07
83	53.5210	2.4470	8311	352	4.08	529	6.12	705	8.16	881	10.20	1057	12.23	1128	13.05
86	57.7171	2.6388	7707	380	4.40	570	6.60	760	8.80	950	11.00	1140	13.19	1216	14.07
89	62.0717	2.8379	7166	409	4.73	613	7.09	817	9.46	1022	11.82	1226	14.19	1308	15.14
92	66.5845	3.0442	6681	438	5.07	658	7.61	877	10.15	1096	12.68	1315	15.22	1403	16.24
95	71.2557	3.2578	6243	469	5.43	704	8.14	938	10.86	1173	13.57	1407	16.29	1501	17.37
98	76.0853	3.4786	5846	501	5.80	751	8.70	1002	11.60	1252	14.49	1503	17.39	1603	18.55
102	81.0732	3.7067	5487	534	6.18	801	9.27	1068	12.36	1334	15.44	1601	18.53	1708	19.77
105	86.2194	3.9420	5159	568	6.57	851	9.85	1135	13.14	1419	16.42	1703	19.71	1816	21.02
108	91.5240	4.1845	4860	603	6.97	904	10.46	1205	13.95	1506	17.44	1808	20.92	1926	22.32
114	102.6083	4.6912	4335	676	7.82	1013	11.73	1351	15.64	1689	19.55	2027	23.46	2162	25.02
Kilowatt Required				38		56		75		94		113		119	

ENGLISH AND METRIC

Gear Unit Pinion Shaft r/min. at Gear Ratios of:		159		238		318		397		476		508	
		1.588:1	178	267	356	445	534	570					
	1.776:1	249	373	497	622	746	796						
	2.487:1	312	468	624	780	936	998						
	3.121:1	444	666	888	1110	1332	1421						
(Std.)	4.440:1	548	821	1095	1369	1643	1752						
	5.476:1	713	1069	1426	1782	2139	2282						
	7.130:1												