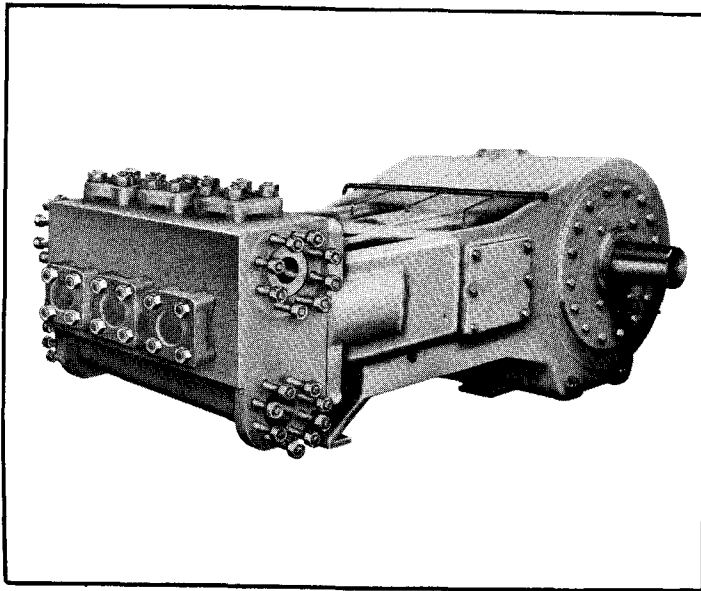


B348-H Triplex



Specifications

Pump Size (Max. Plunger Dia. X Stroke)	inches	4 x 8
Standard Plunger Sizes	inches	3 1/4, 3 1/2, 3 3/4, and 4
Rated bhp at 225 rpm		378
Hydrostatic Test Pressure: Discharge	psig	4,500
Suction	psig	425
Maximum Working Pressure: Discharge	psig	3,000
Suction	psig	275
Two Flanged Suction Connections: Pipe Size	inches	4
ANSI Rating	pounds	150
ANSI Facing		Flat Face
Two Flanged Discharge Connections: Pipe Size	inches	3
ANSI Rating	pounds	1500
ANSI Facing		Large Recess
Crank Shaft Extension: Diameter	inches	6.000
Length	inches	9 1/2
Keyway (Width X Depth)	inches	1 1/2 x 1/2
Oil Capacity	gallons	21
Weight (On Wood Shipping Skids)	pounds	12,950

Performance Data

Stroke Lgth. 8"—Max. Pressure 3,000 psi (6,652 bpd 193.93 gpm)—Max. Vol. 10,076 bpd 293.76 gpm (2,000 psi)—Max. Speed 225 rpm—Max. Plunger Load 25,000 lbs.

(Volumes Indicated are Displacement of Noncompressible Fluid)

Plgr. Dia.	Plgr. Area (Sq. In.)	Displacement Gal. Per Rev.	Max. Pres. psi	100 rpm		125 rpm		150 rpm		175 rpm		200 rpm		225 rpm	
				bpd	gpm	bpd	gpm	bpd	gpm	bpd	gpm	bpd	gpm	bpd	gpm
3 1/4	8.2958	.8619	3,000	2956	86.19	3695	107.74	4434	129.28	5174	150.83	5913	172.38	6652	193.93
3 1/2	9.6211	.9996	2,500	3429	99.96	4286	124.95	5143	149.94	6000	174.93	6857	199.92	7714	224.91
3 3/4	11.045	1.1475	2,260	3936	114.75	4920	143.44	5904	172.12	6888	200.81	7872	229.50	8856	258.19
4	12.566	1.3056	2,000	4478	130.56	5598	163.20	6717	195.84	7837	228.48	8956	261.12	10,076	293.76
Brake Horsepower Required				168		210		252		294		336		378	
Plunger Dia. (Inches)								Stuffing Box Bore (Inches)							
3 1/4 - 3 1/2								4 1/2							
3 3/4 - 4								5 1/2							